



สแลมเบอร์ แผ่นพับรวมผ้า幔านทึบแสง

SLUMBER

Blackout Collection





Design Code : **80047 SLUMBER**

Width : 55 inch/140 cm

Content : 100% Polyester

Weight : 270 g/sqm

Repeat Size : -

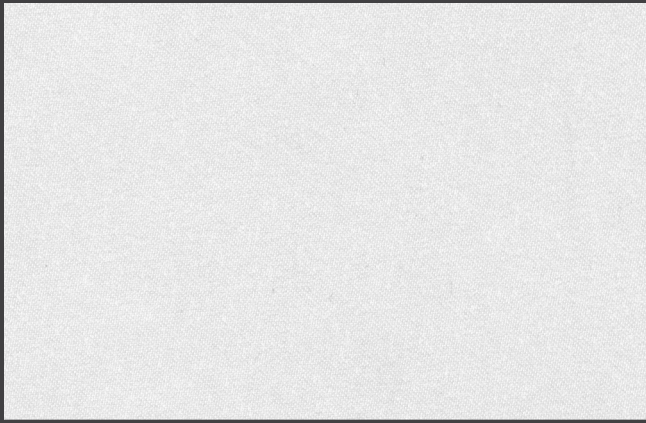
Purpose : Blackout 4 Pass Silicone Coating

Care :  | 

Price : 590 Baht/Yard



*The colours in production might slightly vary from this reference due to different lots in production



80047-101 WHITE



80047-105 BROWN



80047-102 LIGHT BEIGE



80047-106 LIGHT GREY



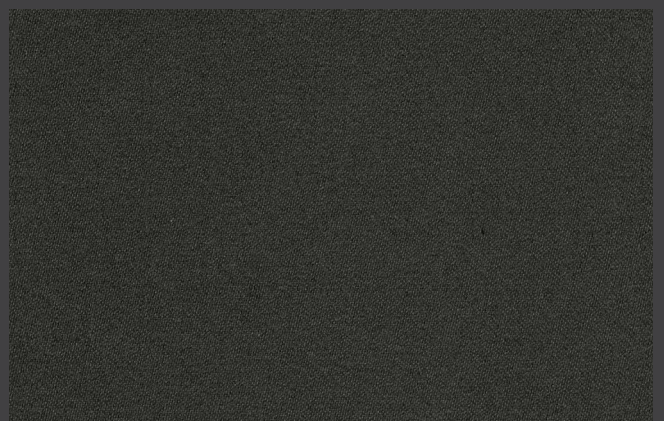
80047-103 BEIGE



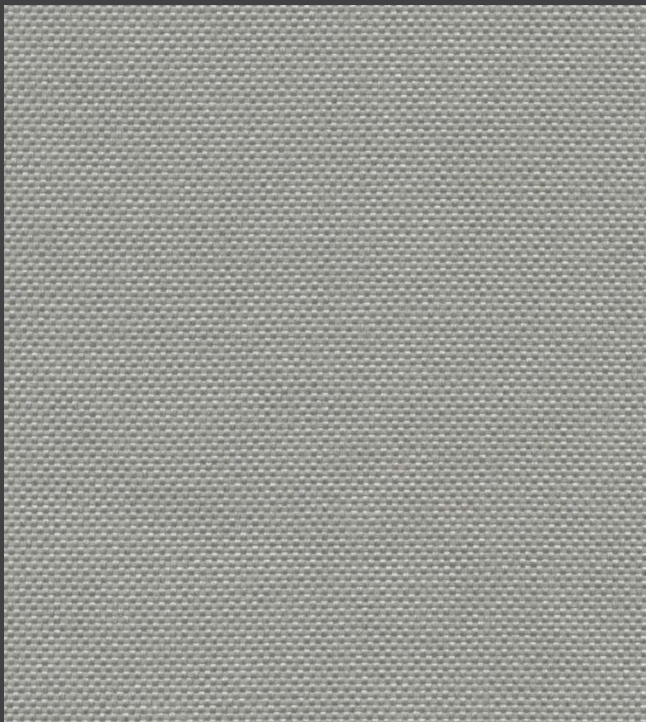
80047-107 GREY



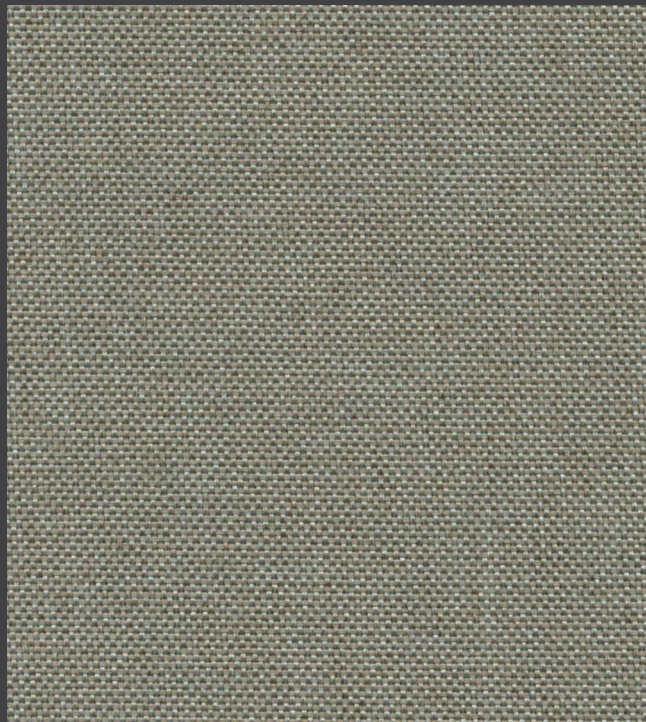
80047-104 KHAKI



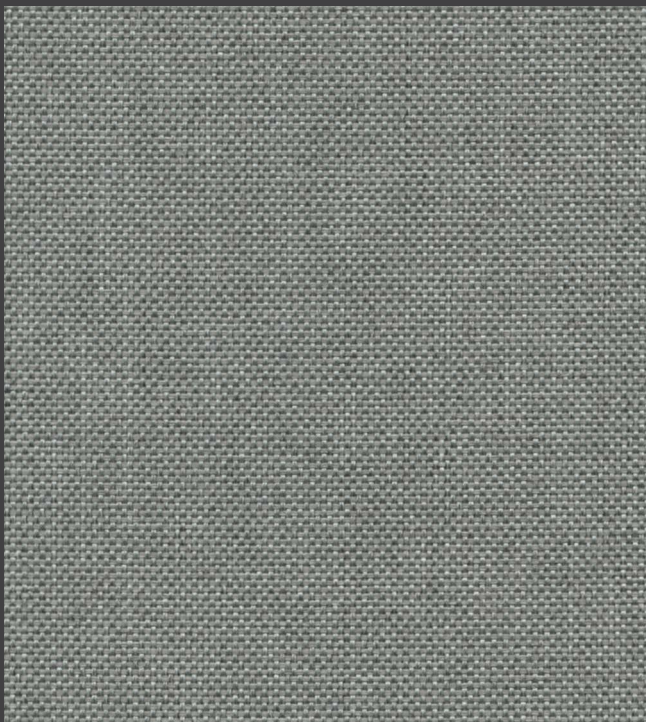
80047-108 DARK GREY



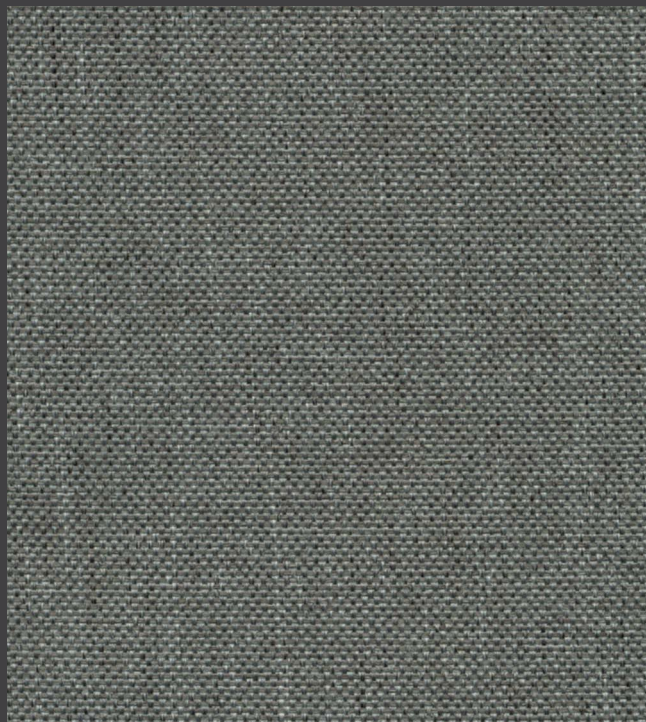
80035-101 BEIGE



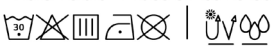
80035-102 BROWN

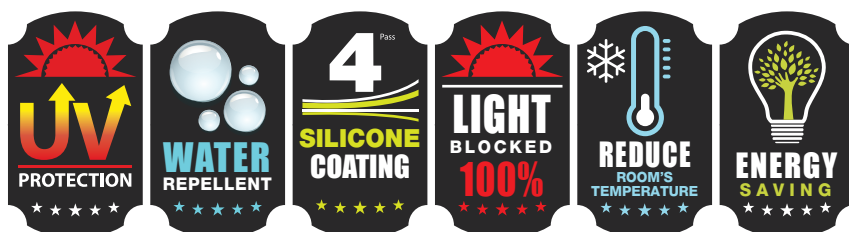


80035-103 LIGHT GREY

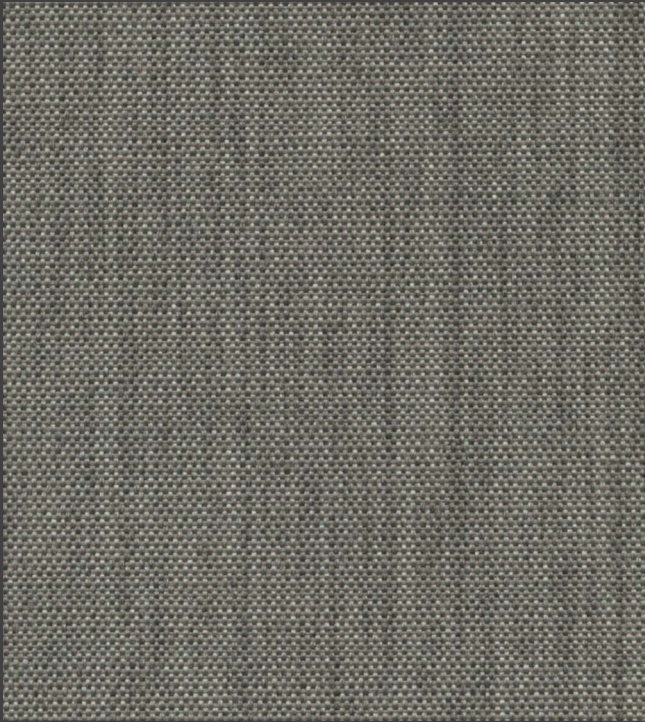


80035-104 GREY

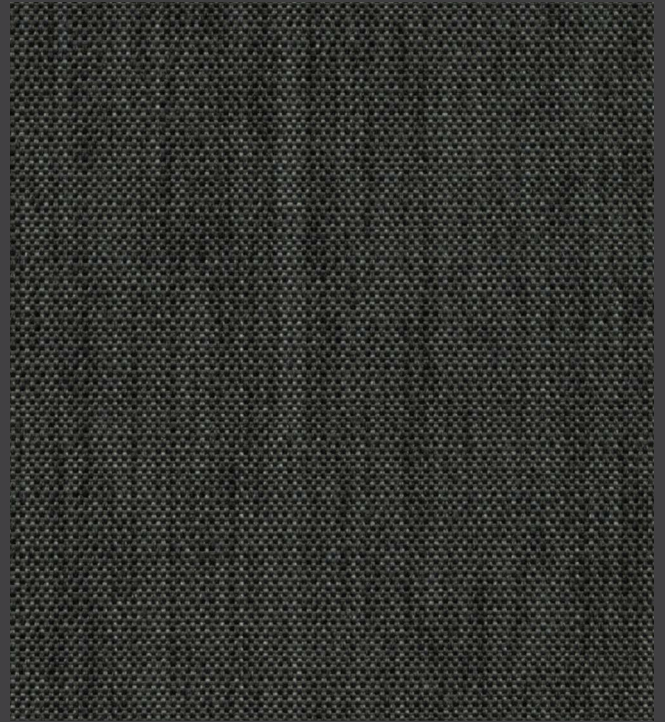
Design Code : **80035 LEIA**
 Width : 55 inch/140 cm
 Content : 100% Polyester
 Weight : 330 g/sqm
 Repeat Size : -
 Purpose : Blackout 4 Pass Silicone Coating
 Care : 
 Price : 590 Baht/Yard



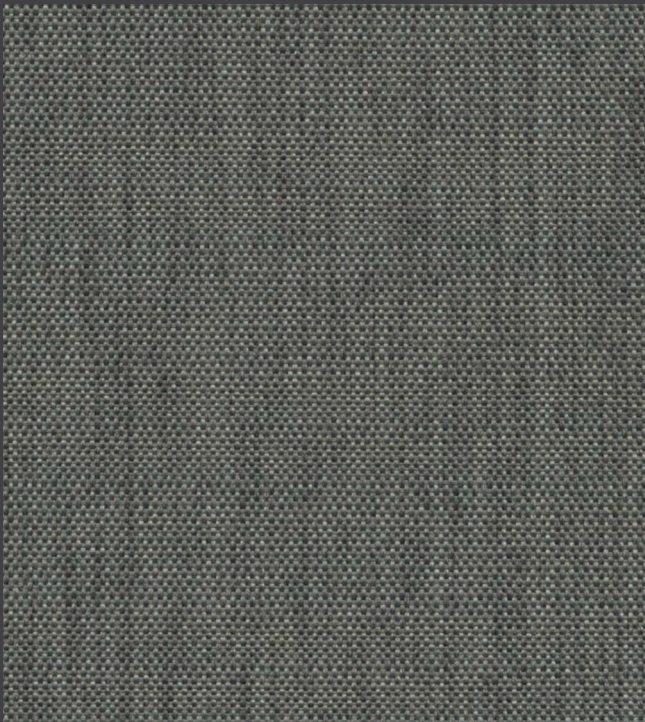
*The colours in production might slightly vary from this reference due to different lots in production



80034-101 LIGHT BROWN

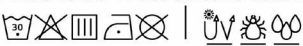


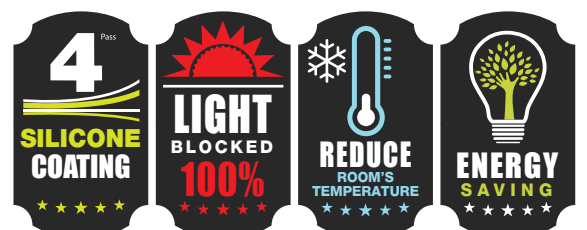
80034-103 DARK GREY



80034-102 GREY



Design Code : **80034 HAN SOLO**
 Width : 55 inch/140 cm
 Content : 100% Polyester
 Weight : 330 g/sqm
 Standard : **ANTI DUST MITES**
 Purpose : **Blackout 4 Pass Silicone Coating**
 Care : 
 Price : 590 Baht/Yard



*The colours in production might slightly vary from this reference due to different lots in production



80033-101/1 LIGHT GREY

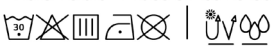


80033-103/1 DARK GREY



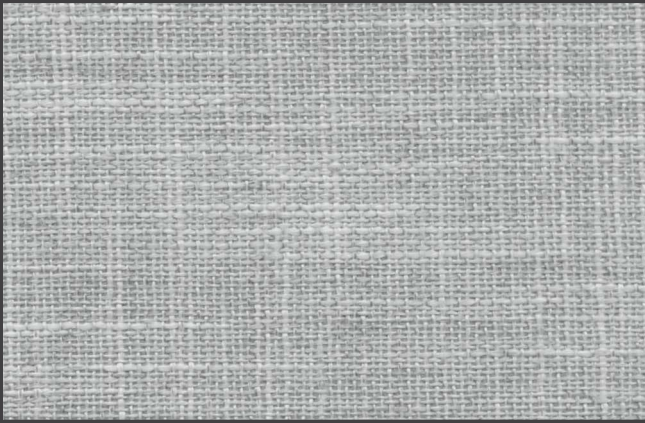
80033-102/1 GREY



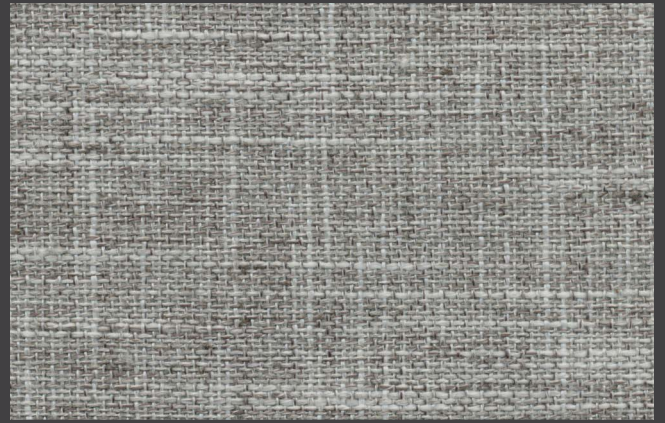
Design Code : **80033 LIGHTSABER**
 Width : 55 inch/140 cm
 Content : 100% Polyester
 Weight : 340 g/sqm
 Repeat Size : -
 Purpose : Blackout 4 Pass Silicone Coating
 Care : 
 Price : 650 Baht/Yard



*The colours in production might slightly vary from this reference due to different lots in production



80032-101 CLOUD



80032-104 LIGHT GREY



80032-102 LIGHT BROWN



80032-105 GREY



80032-103 BROWN

80032-106 DARK GREY

Design Code : **80032 MOONLESS**

Width : 55 inch/140 cm

Content : 88% Polyester, 12% Linen

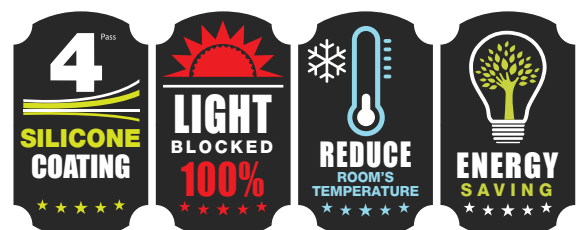
Weight : 370 g/sqm

Standard : ANTI DUST MITES

Purpose : Blackout 4 Pass Silicone Coating


Care : : |

Price : 590 Baht/Yard



*The colours in production might slightly vary from this reference due to different lots in production



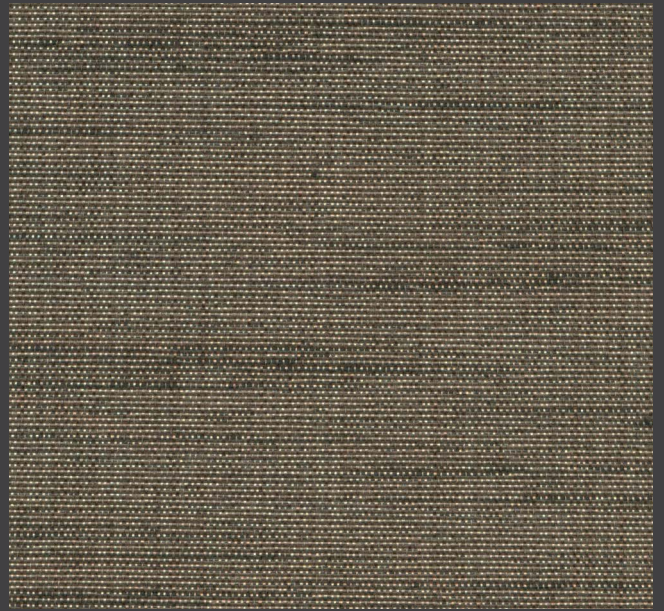
Design Code : **80031 STARLESS**
 Width : 55 inch/140 cm
 Content : 70% Polyester, 30% Cotton
 Weight : 330 g/sqm
 Standard : **ANTI DUST MITES**
 Purpose : **Blackout 4 Pass Silicone Coating**
 Care : 
 Price : 590 Baht/Yard



*The colours in production might slightly vary from this reference due to different lots in production



80031-101 WHITE



80031-104 BROWN



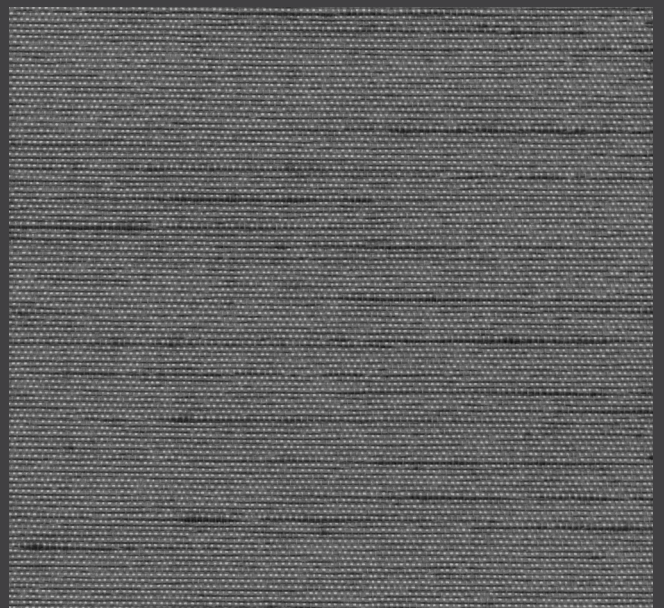
80031-102 BEIGE



80031-105 LIGHT GREY

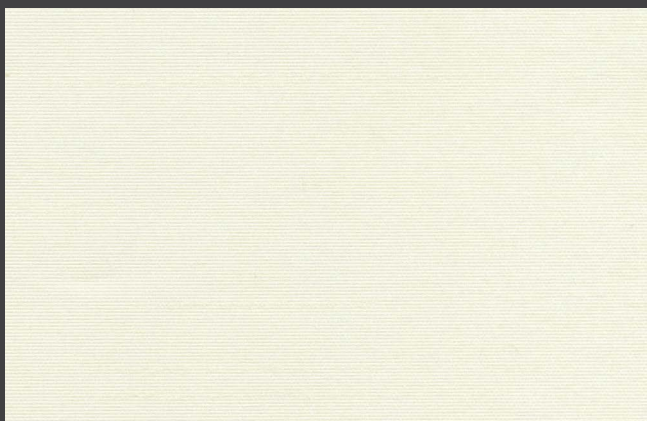


80031-103 LIGHT BROWN



80031-106 GREY

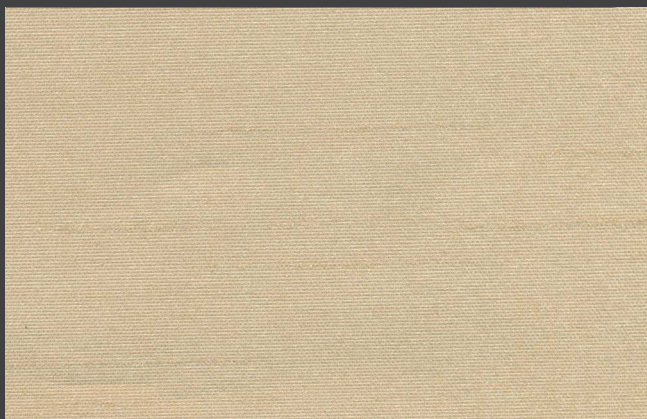
*The colours in production might slightly vary from this reference due to different lots in production



80009-101 WHITE



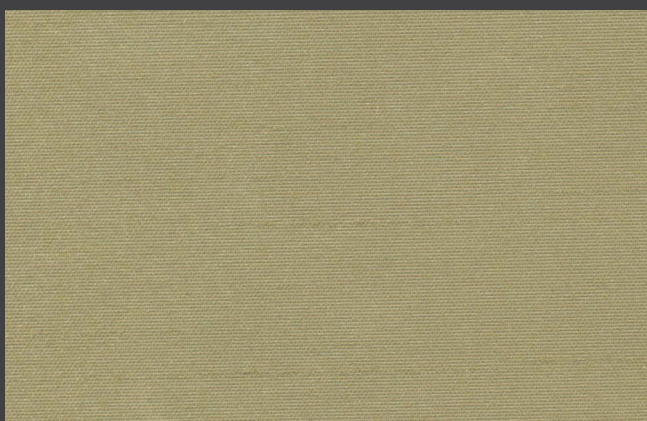
80009-104 BROWN



80009-102 BEIGE



80009-105 GREY



80009-103 GOLD



80009-106 BLACK

Design Code : **80009 PIETA**

Width : 55 inch/140 cm

Content : 100% Polyester

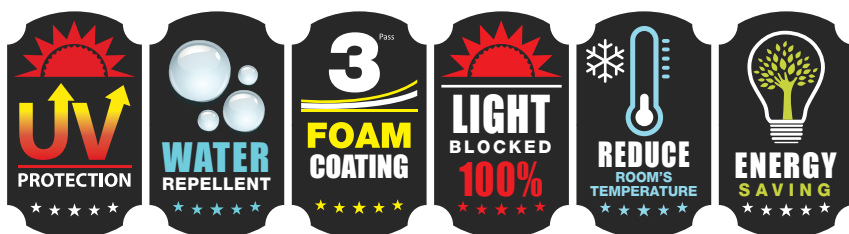
Weight : 275 g/sqm

Repeat Size : -

Purpose : Blackout 3 Pass Foam Coating

Care :  | 

Price : 590 Baht/Yard



*The colours in production might slightly vary from this reference due to different lots in production

The image shows a close-up of a dark blue, textured fabric. The texture is a fine, woven pattern, possibly a book cover or endpaper. The color is a deep, slightly mottled blue with some lighter and darker variations, giving it a rich, aged appearance. The lighting is even, highlighting the intricate details of the weave.

The image displays a highly textured, brown surface, characteristic of a book cover or endpaper. The texture is composed of a dense, repeating pattern of small, raised, rectangular or square elements, creating a woven or quilted appearance. The color is a mottled brown, with variations in tone that emphasize the three-dimensional quality of the texture. The lighting is even, highlighting the fine details of the material's grain and the uniformity of the pattern.

1. The first step in the process is to identify the problem or issue that needs to be addressed. This involves gathering information and understanding the context of the problem.

2. Once the problem is identified, the next step is to define the objectives and goals of the project. This helps to clarify what is to be achieved and provides a clear direction for the work.

3. The third step is to develop a plan or strategy to address the problem. This involves breaking down the problem into smaller, manageable tasks and determining the resources needed to complete them.

4. The fourth step is to implement the plan. This involves putting the strategy into action and monitoring progress to ensure that the project is on track.

5. The final step is to evaluate the results of the project. This involves assessing the outcomes against the objectives and goals and identifying any lessons learned for future projects.

*The colours in production might slightly vary from this reference due to different lots in production



Design Code : **10815 MUNOZ**

Width : 55 inch/140 cm

Content : 100% Cotton

Weight : 340 g/sqm

Repeat Size : -

Purpose : Blackout 3 Pass Foam Coating

Care :  | 

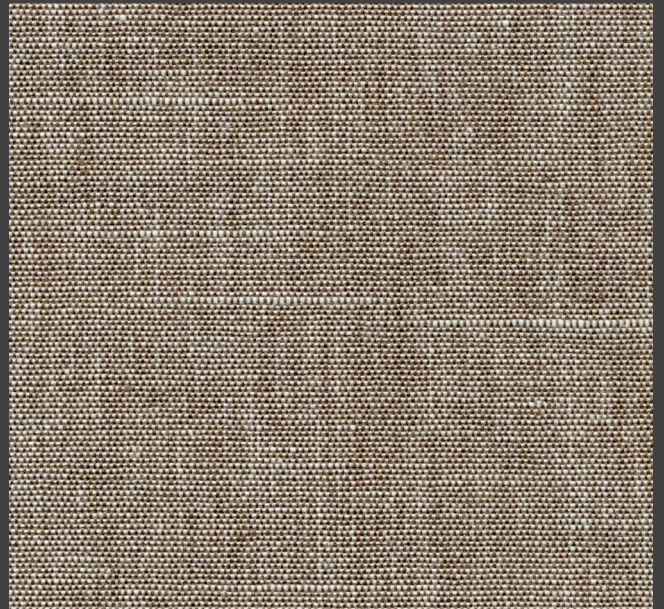
Price : 700 Baht/Yard



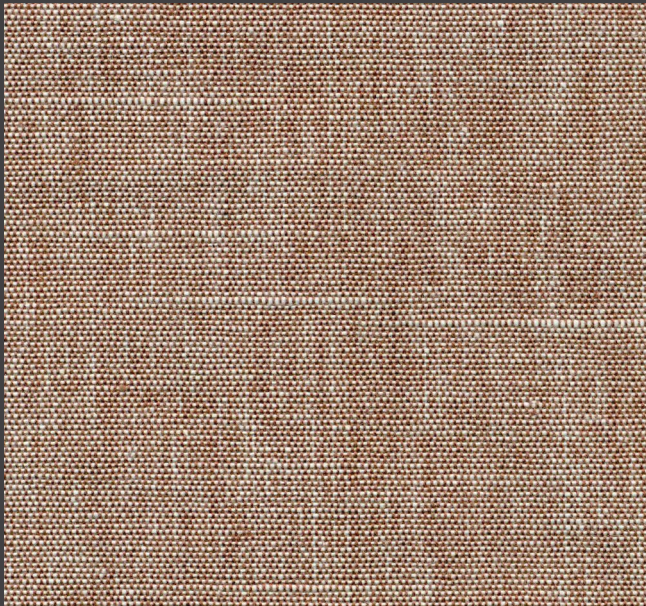
*The colours in production might slightly vary from this reference due to different lots in production



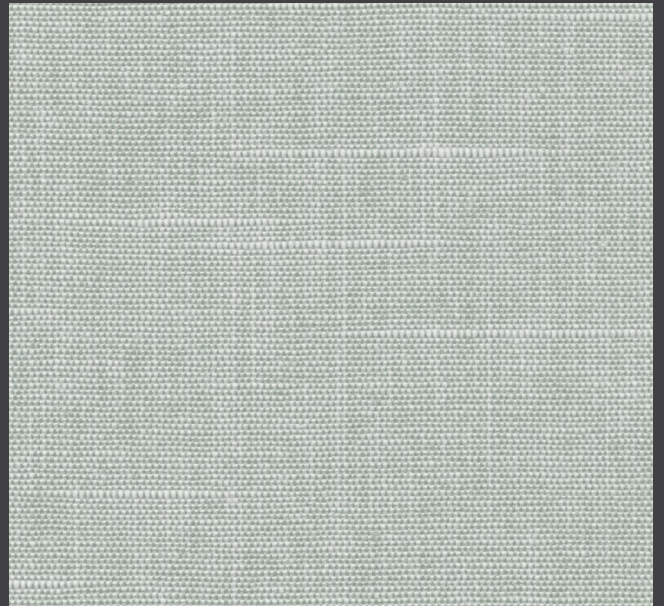
10815-102 CREAM



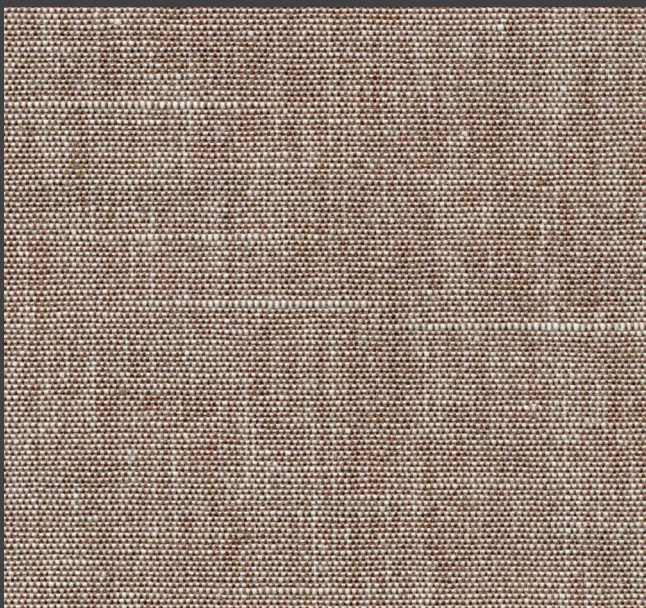
10815-106 DARK BROWN



10815-104 LIGHT BROWN

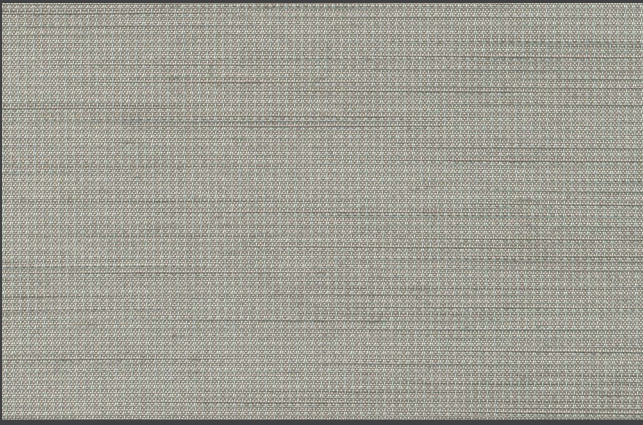


10815-107 LIGHT BLUE

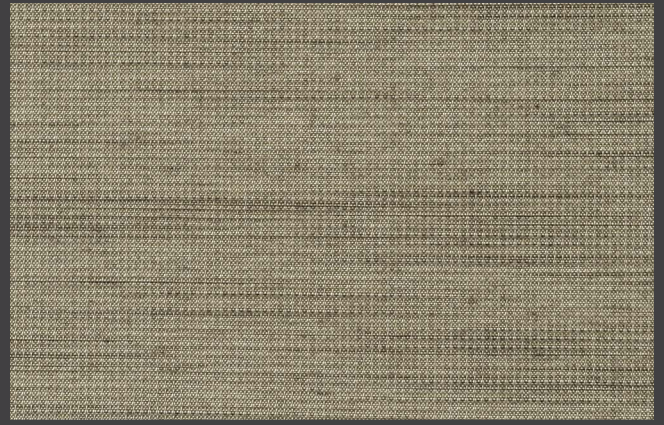


10815-105 BROWN

*The colours in production might slightly vary from this reference due to different lots in production



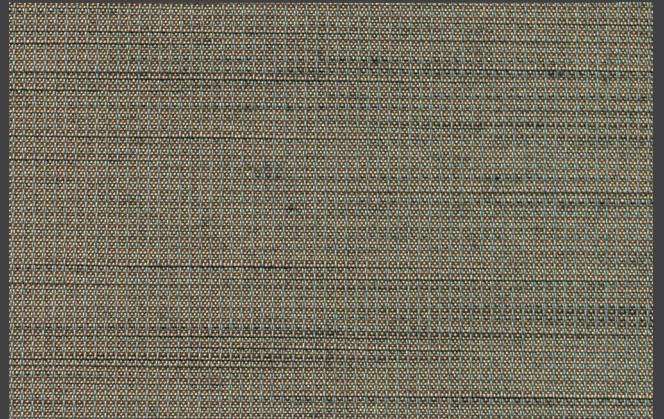
80049-101 LIGHT BEIGE



80049-104 BROWN



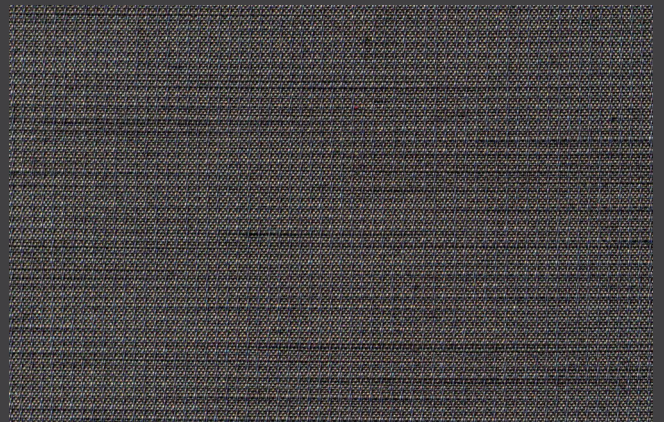
80049-102 BEIGE



80049-105 DARK BROWN



80049-103 GREY



80049-106 DARK GREY

Design Code : **80049 DARTH VADER**

Width : 55 inch/140 cm

Content : 80% Polyester, 20% Cotton

Weight : 300 g/sqm

Repeat Size : -

Purpose : Blackout 4 Pass Silicone Coating

Care : |

Price : 700 Baht/Yard



*The colours in production might slightly vary from this reference due to different lots in production



18021-121 WHITE



18025-125 WHITE



18022-122 OFF-WHITE



18026-126 OFF-WHITE



18023-123 WHITE



18001-101 SILVER



18024-124 OFF-WHITE

Design Code : **18001 BLACKOUT LINING**

Width : 60 inch/152 cm

Content : 100% Polyester

Weight : 70 g/sqm

Repeat Size : -

Purpose : Blackout Lining Silver Coating

Care : | UV

Price : 240 Baht/Yard

Design Code : **18021-121, 18022-122**

Width : 55 inch/140 cm

Content : 80% Polyester, 20% Cotton

Weight : 250 g/sqm

Repeat Size : -

Purpose : Blackout Lining 3 Pass Foam Coating

Care : | UV

Price : 280 Baht/Yard

Design Code : **18023-123, 18024-124**

Width : 110 inch/280 cm

Content : 80% Polyester, 20% Cotton

Weight : 250 g/sqm

Repeat Size : -

Purpose : Blackout Lining 3 Pass Foam Coating

Care : | UV

Price : 560 Baht/Yard

Design Code : **18025-125, 18026-126**

Width : 110 inch/280 cm

Content : 80% Polyester, 20% Cotton

Weight : 280 g/sqm

Flame Retardant: NFPA 701-2010 method 1

Purpose : Blackout Lining 3 Pass Foam Coating

Care : | UV Flame

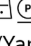
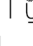
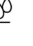

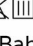
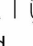
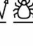
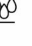
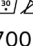
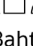


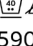
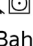
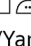
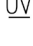
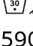
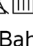
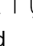

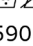
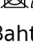
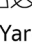
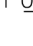


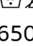
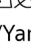

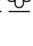

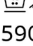
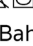
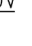
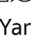
Price : 790 Baht/Yard

*The colours in production might slightly vary from this reference due to different lots in production

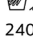
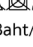
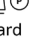
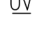


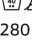
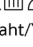
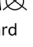
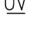


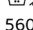
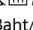
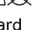
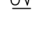


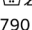
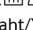
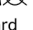
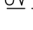


SLUMBER

Blackout Collection

BLACKOUT

Design Code : 10815 MUNOZ	: 80031 STARLESS	: 80034 HAN SOLO
Width : 55 inch/140 cm	: 55 inch/140 cm	: 55 inch/140 cm
Content : 100% Cotton	: 70% Polyester, 30% Cotton	: 100% Polyester
Weight : 340 g/sqm	: 330 g/sqm	: 330 g/sqm
Repeat Size : -	: ANTI DUST MITES	: ANTI DUST MITES
Purpose : Blackout 3 Pass Foam Coating	: Blackout 4 Pass Silicone Coating	: Blackout 4 Pass Silicone Coating
Care :      	:      	:      
Price : 700 Baht/Yard	: 590 Baht/Yard	: 590 Baht/Yard
Design Code : 80007 DUNKEL	: 80032 MOONLESS	: 80035 LEIA
Width : 54 inch/137 cm	: 55 inch/140 cm	: 55 inch/140 cm
Content : 80% Polyester, 20% Cotton	: 88% Polyester, 12% Linen	: 100% Polyester
Weight : 420 g/sqm	: 370 g/sqm	: 330 g/sqm
Repeat Size : -	: ANTI DUST MITES	: -
Purpose : Blackout 3 Pass Foam Coating	: Blackout 4 Pass Silicone Coating	: Blackout 4 Pass Silicone Coating
Care :      	:      	:      
Price : 700 Baht/Yard	: 590 Baht/Yard	: 590 Baht/Yard
Design Code : 80009 PIETA	: 80033 LIGHTSABER	: 80047 SLUMBER
Width : 55 inch/140 cm	: 55 inch/140 cm	: 55 inch/140 cm
Content : 100% Polyester	: 100% Polyester	: 100% Polyester
Weight : 275 g/sqm	: 340 g/sqm	: 270 g/sqm
Repeat Size : -	: -	: -
Purpose : Blackout 3 Pass Foam Coating	: Blackout 4 Pass Silicone Coating	: Blackout 4 Pass Silicone Coating
Care :      	:      	:      
Price : 590 Baht/Yard	: 650 Baht/Yard	: 590 Baht/Yard
Design Code : 80049 DARTH VADER		
Width : 55 inch/140 cm		
Content : 80% Polyester, 20% Cotton		
Weight : 300 g/sqm		
Repeat Size : -		
Purpose : Blackout 4 Pass Silicone Coating		
Care :      		
Price : 700 Baht/Yard		

BLACKOUT LINING

Design Code : 18001 BLACKOUT LINING	: 18021-121, 18022-122
Width : 60 inch/152 cm	: 55 inch/140 cm
Content : 100% Polyester	: 80% Polyester, 20% Cotton
Weight : 70 g/sqm	: 250 g/sqm
Repeat Size : -	: -
Purpose : Blackout Lining Silver Coating	: Blackout Lining 3 Pass Foam Coating
Care :      	:      
Price : 240 Baht/Yard	: 280 Baht/Yard
Design Code : 18023-123, 18024-124	: 18025-125, 18026-126
Width : 110 inch/280 cm	: 110 inch/280 cm
Content : 80% Polyester, 20% Cotton	: 80% Polyester, 20% Cotton
Weight : 250 g/sqm	: 280 g/sqm
Repeat Size : -	: Flame Retardant: NFPA 701-2010 method 1
Purpose : Blackout Lining 3 Pass Foam Coating	: Blackout Lining 3 Pass Foam Coating
Care :      	:      
Price : 560 Baht/Yard	: 790 Baht/Yard

บริษัท นิตาส เทสซิล จำกัด

NITAS TESSILE

   NitasTessile

www.nitas-tessile.com